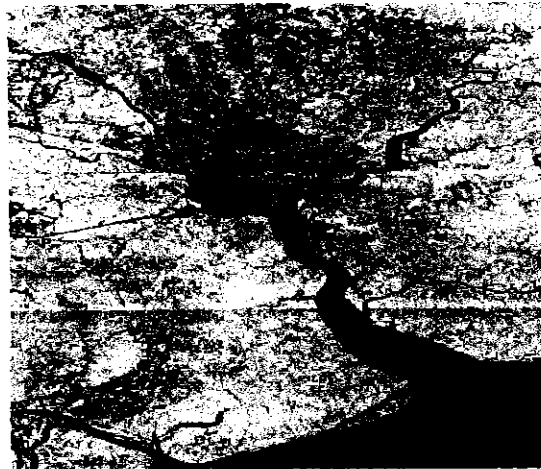


THILAWA

Special Economic Zone

(Yangon Region)

- Thilawa Special Economic Zone is located in Southern and Northern Parts of Kyauk Tan Township The area of Thilawa Special Economic Zone will be 23422148.442 square meter (5787.718 acre).
- It will be developed in Yangon Region which is only 38 kilometers from Yangon Airport and 23 Kilometers from downtown area.

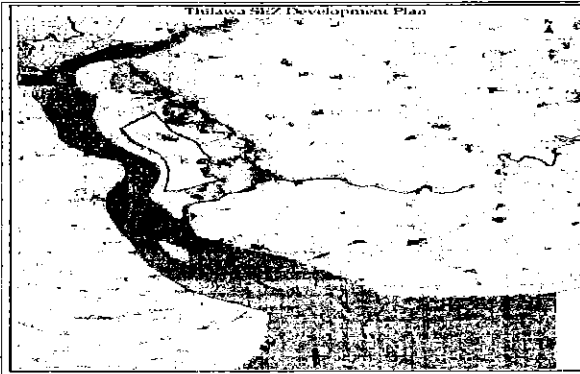


- From Japanese side, Mitsubishi, Sumitomo and Marubeni companies will make 49 percent of total investment while a Myanmar public company contributes 51 percent of investment amount.
- According to Memorandum of Understanding, Japan-Myanmar Consortium takes a role of

developer of the Thilawa Special Economic Zone. Therefore, we are impressed intended to organize as Myanmar-Japan Consortium Joint-Venture which is pooled with Myanmar Consortium is representatives of Myanmar business companies and Japan Consortium. Union of Myanmar Federation of Chamber of Commerce and industry if now conducting to organize Myanmar Consortium.

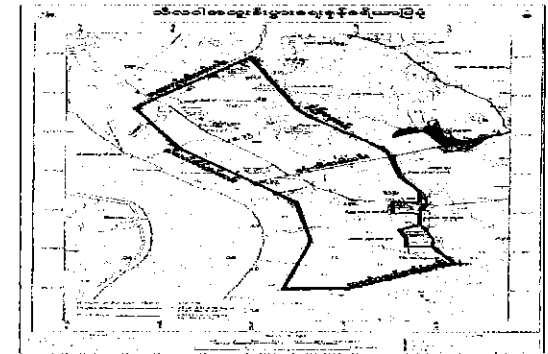
- According to the Memorandum on the Cooperation, the Zone will be established two areas which are called Class A and Class B. Class A area is planned to develop with

high quality infrastructures and be dedicated for high quality manufacturing industries and multinational industries. Class B area will be developed with key basic infrastructures that include main roads, flood control, drainage, etc. and be dedicated for labor intensive industries such as garment, food processing, wire harness industries, etc. The sizes of the Class A and Class B area within the Special Economic Zone will be classified the market demand basis. In addition, the commercial operation of the Thilawa Special Economic Zone will be commenced in the year of 2015.



- In addition, the development of the outside infrastructure of the Special Economic Zone such as transportation, water resources, sufficient electricity, and other related infrastructure development.
- A large of capital and high-technologies for development of outside infrastructure is also important supporting factor for Special Economic Zone.

- Eighty percent of feasibility study of Thilawa SEZ was completed and twenty percent is performing to complete in August 2013.



Contact Address

Directorate of Investment and Company Administration

Tel : 95-67-406141

Fax : 95-67-406363

e-mail: dica.mnped@mptmail.net.mm

Website: www.dica.gov.mm

www.mnped.gov.mm